

KIRKMAN HOUSE MUSEUM



THE EXHIBITS AND EVENTS OF 2015

KIRKMAN HOUSE MUSEUM

214 North Colville Street
Walla Walla, WA 99362
509-529-4373 • kirkmanhousemuseum.org

Open Wednesday through Saturday, 10 am to 4 pm
and Sunday, 10 am to 2 pm
Closed December 14, 2015 through January 8, 2016
Winter hours: January 9 through March 12, 2016
Open Saturdays only, 10 am to 2 pm

\$5 per person, \$20 per family
Free to Kirkman House Museum, NARM,
ROAM and Blue Star members.

Visit one of Walla Walla's grandest mansions turned museum. Learn how a young textile salesman from England and his wife made their fortune in America's Wild West. William and Isabella Kirkman completed this grand home in 1880. Today it is a place that shares their story and those of the early days of Walla Walla through exhibits, programs and events. The home is furnished with family heirlooms and period pieces that illustrate daily Victorian life.



The Kirkman House has a rich and varied history. Completed at the end of 1880, it served as the Kirkman family's home for almost 40 years.

In 1919 the family allowed Whitman College to use the house as a freshman men's dormitory called Kirkman Hall. In 1924 the family deeded the house to the College and it was immediately sold to a private party who then converted the house into 12 apartments.

The home's use as an apartment house for more than 50 years came at a high price. The rooms were divided, ceilings were lowered, and some unique architectural enhancements were damaged or removed. By the mid-1970s, its future looked bleak.

In 1974, a local historic preservation organization helped the Kirkman House become listed in the National Register of Historic Places. Three years later, the group bought the house, wound down its rental business and began a long but steady march to restore the original beauty and grace of the home. During the 1980s and 1990s, dozens of restoration projects transformed the home's 10 major rooms,

its exterior and the grounds into showpieces. A mysteriously missing widow's walk was found and replaced on the home's roof. All rooms were restored to their original dimensions. Room decorations and furnishings were replaced with treatments and pieces of the Victorian era. Walking through the front doors today turns time back to an age of elegance.

Come see what a difference 40 years of care and love have made to this grand home. It is a proud testament to the vision of both the Kirkman family and the hundreds of people who have served as leaders of Kirkman House Museum.

Photos: Gary Tetz, Donna Lasater and Rick Tuttle
Map: Karen Heinzman
Design: Tim Copeland

WALLA WALLA GOES TO WAR

Wednesday, March 18 through
Monday, September 7, 2015

Walla Walla Goes to War looks at World War II from a local perspective. The people who lived here then didn't start this war. Some didn't want to fight in it. But when war was thrust upon them, they did their duty to protect the country they loved.

Our community sent men and women to serve in Europe and the Pacific, and their stories are shared in this exhibit through videos and artifacts.

Others stayed home and faced the challenges of rationing, scrap drives, black outs and racial tensions. Their experiences are featured too.

This exhibit displays a rich array of wartime artifacts: grenades, uniforms, helmets, a gas mask, a Luftwaffe dagger and a Japanese battlefield flag. Ration books, wartime recipes, censored letters and diaries are also



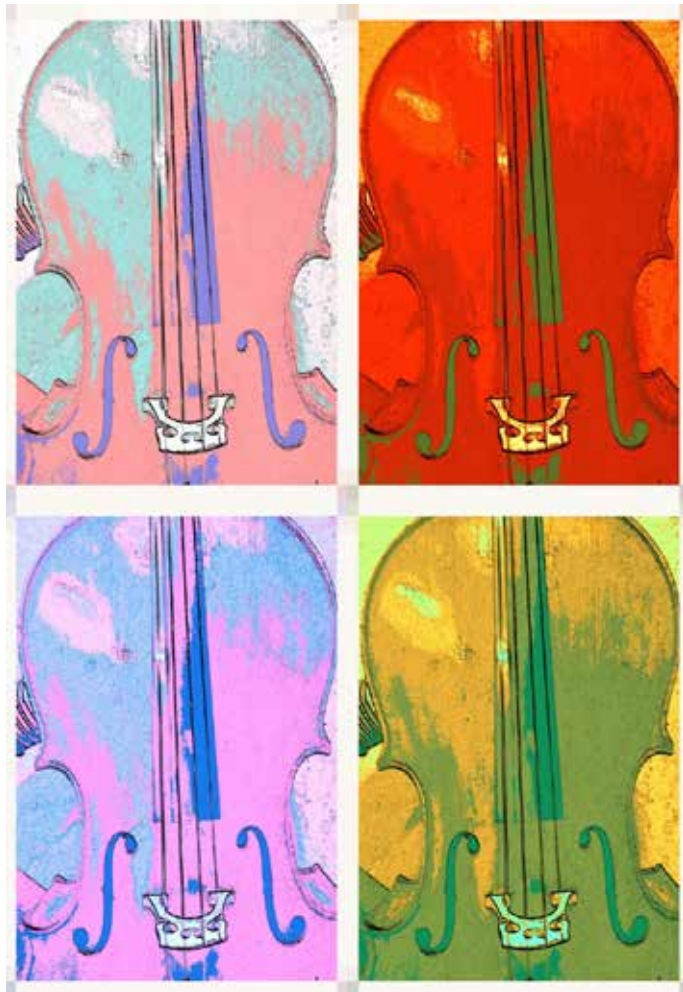
displayed. The exhibit features several veteran interviews shared with us by our local chapter of the Red Cross.

Multimedia presentations explore the Walla Walla Fairground's prisoner of war stockade, the squadron of African American WACs stationed here, Walla Walla's response to rationing and salvage, and the Victory Center's war bond effort.

One room is devoted to Walla Walla's Army Air Corps base where crews trained to fly B-17 and B-24 bombers. A wartime map shows the scope of the airbase and gives insight into the original purpose of the buildings that remain there.

Posters describe the experiences of the men and women who worked at the base. Airbase artifacts and photos are displayed. Visitors can leaf through issues of the *Walla Wallop*, the newsletter that describes wartime life on the base.

Pick up a driving tour map and visit wartime-era locations around town. Explore what life was like over 70 years ago when Walla Walla went to war.



CHAMBER MUSIC

Open Rehearsal

Wednesday, June 10, 2015

10 am to 12 pm

We are pleased to host an open rehearsal of the Walla Walla Chamber Music Festival. This free event is a fascinating look at the creative process that takes place in preparation for a performance.

Springtime

Sunday, May 10, 2015

2 to 3pm and 5 to 7pm

Enjoy the rhapsodic sound of cello and harp in a very special Mother's Day concert.

The Night Before Christmas

Sunday, December 6, 2015

2 to 3 pm and 5 to 7pm

An 'across the ages' concert with Moore's famous poem woven in. Children are welcome.

See kirkmanhousemuseum.org for details and tickets.

ROSIE THE RIVETER

Sunday, June 28, 2015

2 pm to 4 pm

The *Rosie the Riveter* fashion show will feature a variety of garments from the 1940s.

Wartime clothing choices were affected by shortages and coupons, and women began to wear trousers outside the home as necessary for their new roles in industry. Despite the challenges, Forties' clothing had its special style and charm. At this fashion show, models will be sporting not only "fashion on the ration" but also World War II uniforms.

Refreshments will be served.





QUILT EXHIBIT

Wednesday, September 16 through
Friday, October 30, 2015

A group of vintage quilts will be on display featuring those in the museum's collection as well as many from community members.

Pioneers treasured their quilts not only for their warmth but for the memory of family members left behind as they made their new homes in the West. The quilting bee was a social and artistic outlet for women in pioneer times with many quilts being made for a special occasion such as a wedding.

SHEEP TO SHAWL

Saturday, October 3, 2015
10 am to 3 pm

Sheep to Shawl is a family festival that explores how our ancestors made their clothing from wool. This free event will delight the entire family.

Children will love seeing the sheep. Visitors will also enjoy demonstrations of wool carding, dyeing, spinning and weaving. Lace making and knitting on a vintage sock machine will also be demonstrated.

Local and regional vendors will offer handmade items for sale. Articles for sale will include a wide variety of woolen and fiber clothing, raw and ready to spin fiber, hand-spun and hand-dyed yarns, and spinning and weaving equipment.





VICTORIAN BALL

Saturday, October 24, 2015
7 pm to 10 pm

Join us for an evening of elegance and Victorian period dance. Nineteenth century attire from the 1860s to 1900 is desired but not required so don your finery and come show off. These dances are similar to modern Contra dances and are designed to be mixers, so no partner is required.

Doors open at 6:30 pm and dancing starts at 7 pm so you don't want to be fashionably late to this event. Dance Masters Dan and Barbara Clark will do the calling with live music provided by the 12-piece *Country Dance Orchestra* from La Grande, Oregon.

See kirkmanhousemuseum.org for location, directions and registration.

WHISPERED MEMORIES

Saturday, November 7, 2015
10 am to 4 pm

Building on the museum's 15 years of previous *Whispered Memories* psychic presentations, this event has expanded to a Psychic Fair with a traditional group session and individual consultations with readers of various psychic disciplines.

Whispered Memories will be lead by Shirley Scott at 2 pm. Scott is an internationally-known psychic and animal communicator as well as a medium and energy healer. She reads humans, animals, crosses the veil to talk to loved ones and is a medical intuitive with empathic abilities. Session cost is \$20.

In addition to *Whispered Memories*, five other readers specializing in various psychic disciplines will be at the museum from 10 am to 4 pm for private consultations. Each 20-minute session costs \$25. These sessions require no reservation but will be on a first-come, first-served basis and are available for registration online at kirkmanhousemuseum.org.





VICTORIAN CHRISTMAS

Holiday Bazaar

Thursday and Friday, December 3 and 4, 2015
Noon to 8 pm

Victorian Christmas

Saturday, December 5, 2015
11 am to 5:30 pm

The Holiday Bazaar will be in full swing on Thursday and Friday during the first week of December.

Over a dozen vendors will display their hand-crafted jewelry, knitted and crocheted items, homemade holiday ornaments, candies, note cards, gourmet foods, photo albums, apparel for children and adults, glass works and many other beautiful gift items.

On Saturday, join us for our annual Victorian Christmas celebration. Entertainment will include a choir group, Living History characters, and Christmas carolers. Warm yourself with hot chocolate before enjoying the downtown *Parade of Lights*.

THE LITTLE BLACK DRESS

January 9 to February 28, 2016
Saturdays only, 10 am to 2 pm

This exhibit features every woman's secret weapon, the classic black dress. Although a plain black dress was usually worn for period of mourning in the Victorian/Edwardian era, it became fashionable in the 1920s with Coco Chanel and Jean Patou's designs featured in Vogue magazine.

It has been a staple of women's wardrobes through the depression, the flu epidemics in the early 1900s, and World War I and II.

Whether hemlines go up or down, skirts full or straight, strapless or not, silk, cotton or polyester, sexy or conservative - the classic black dress will continue to be an essential part of most women's wardrobes.





WHEN YOU VISIT

Kirkman House Museum is located just three blocks from Main Street and within easy walking distance from many downtown hotels, motels, wine shops and restaurants. On-street parking is plentiful and the museum is easy to find.

Volunteer docents are available for guided tours of the house and to describe the engaging life of the Kirkmans and early Walla Walla. Guests are also free to explore the house and grounds on their own. Guided tours are often one-hour long and provide much more information than self-guided tours. They are available at no cost beyond the admission fee.

The museum has something for everyone. History buffs, lovers of fine architecture and those with curious minds all find Kirkman House fascinating. It's also very popular with children and young adults. This is a museum you and your entire family will enjoy.

BE SURE TO SEE . . .

The Walla Walla valley played an important role in the development of the Pacific Northwest. Visit these historic sites to get their full stories. For more information, see visitwallawalla.org

Fort Walla Walla

755 Myra Road, Walla Walla
fortwallawallamuseum.org
See *Walla Walla's World Wars* exhibit
This exhibit begins on May 21, 2015

Whitman Mission National Historic Site

328 Whitman Mission Road, Walla Walla
nps.gov/whmi

Frenchtown Historic Site

8364 Old Highway 12, Walla Walla
frenchtownpartners.org

Bruce House

318 Main Street, Waitsburg
waitsburghistoricalsociety.org

Dayton Historical Depot and Boldman House Museum

222 E. Commercial Street, Dayton
daytonhistoricdepot.org

Frazier Farmstead Museum

1403 Chestnut Street, Milton-Freewater,
museum.bmi.net

Heritage Station Museum

108 Southwest Frazer Avenue, Pendleton
heritagestationmuseum.org

Tamastlikt Cultural Institute

47106 Wildhorse Blvd, Pendleton
tamastlikt.org

Pendleton Underground Tours

37 S.W. Emigrant Avenue, Pendleton
pendletonundergroundtours.org

